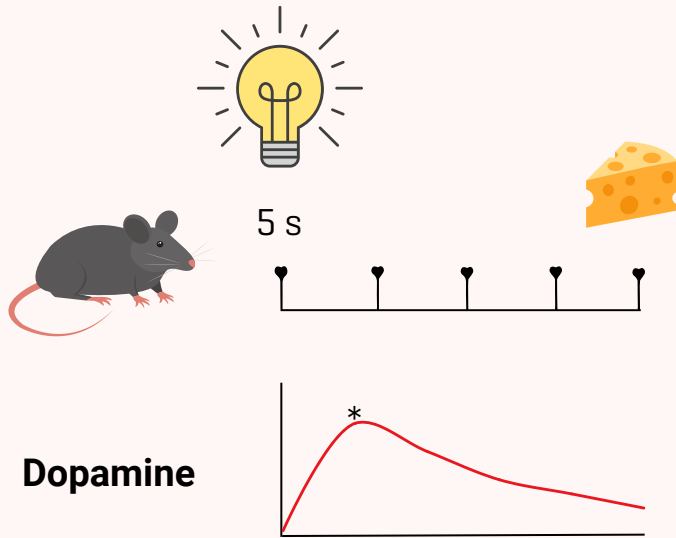
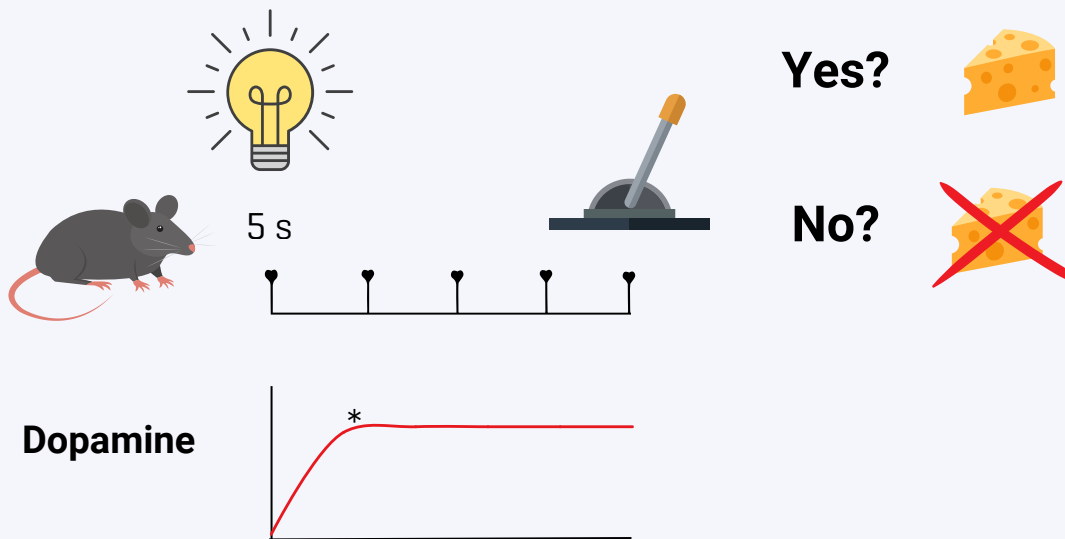


## Pavlovian Experiment



During the experiments a cue light was illuminated for a duration of 5 seconds. For the pavlovian group, a food pellet was delivered into the reward magazine directly after the cue light turned off. Rats in both groups (Pavlovian and Instrumental Learning) released the same quantity of dopamine at the onset of the reward-predictive cue.\*

## Instrumental learning Experiment



For the operant conditioning group, turning off the cue light was followed by extension of the lever below the cue light into the operant box. The lever was retracted after one lever press, which immediately resulted in the delivery of one food pellet reward. Only the operant-conditioning group showed a subsequent, sustained plateau in dopamine concentration throughout the entire 5 seconds cue presentation.