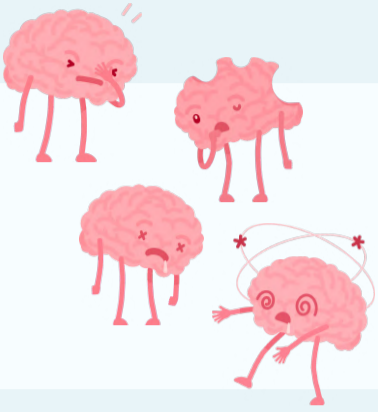


Help us **research** chronic fatigue syndrome/myalgic encephalomyelitis (ME/CFS)



Chronic fatigue syndrome/myalgic encephalomyelitis [ME/CFS] is a chronic disease in which someone becomes severely fatigued and cannot recover from it. It includes neurological symptoms such as: dizziness, sudden drowsiness, and memory-, concentration issues.

The cause is not known and diagnosis is complicated. That's why it's important to investigate the **brain tissue** from ME/CFS patients to see whether any changes have occurred.



The **Netherlands Brainbank** is calling for people to register themselves as a brain donor. Especially those with ME/CFS, but also those without brain-related diseases.

The Netherlands Brainbank is an internationally renowned, organisation that delivers well-characterised and well-documented tissue to researchers **around the world**.



Research with human tissue is one of the **most effective methods** to study and understand diseases because it allows for the direct visualisation of changing molecules and cells.



The comparison between healthy tissue and tissue from ME/CFS patients is crucial in this process. That's why we're looking for donors without any brain disorders as well, so called **controls**.

Become a brain donor

Are you considering to become a brain donor? Through the link in our bio you can learn more or you can request an information package which includes a registration form immediately.

[Read more on our website](#)

